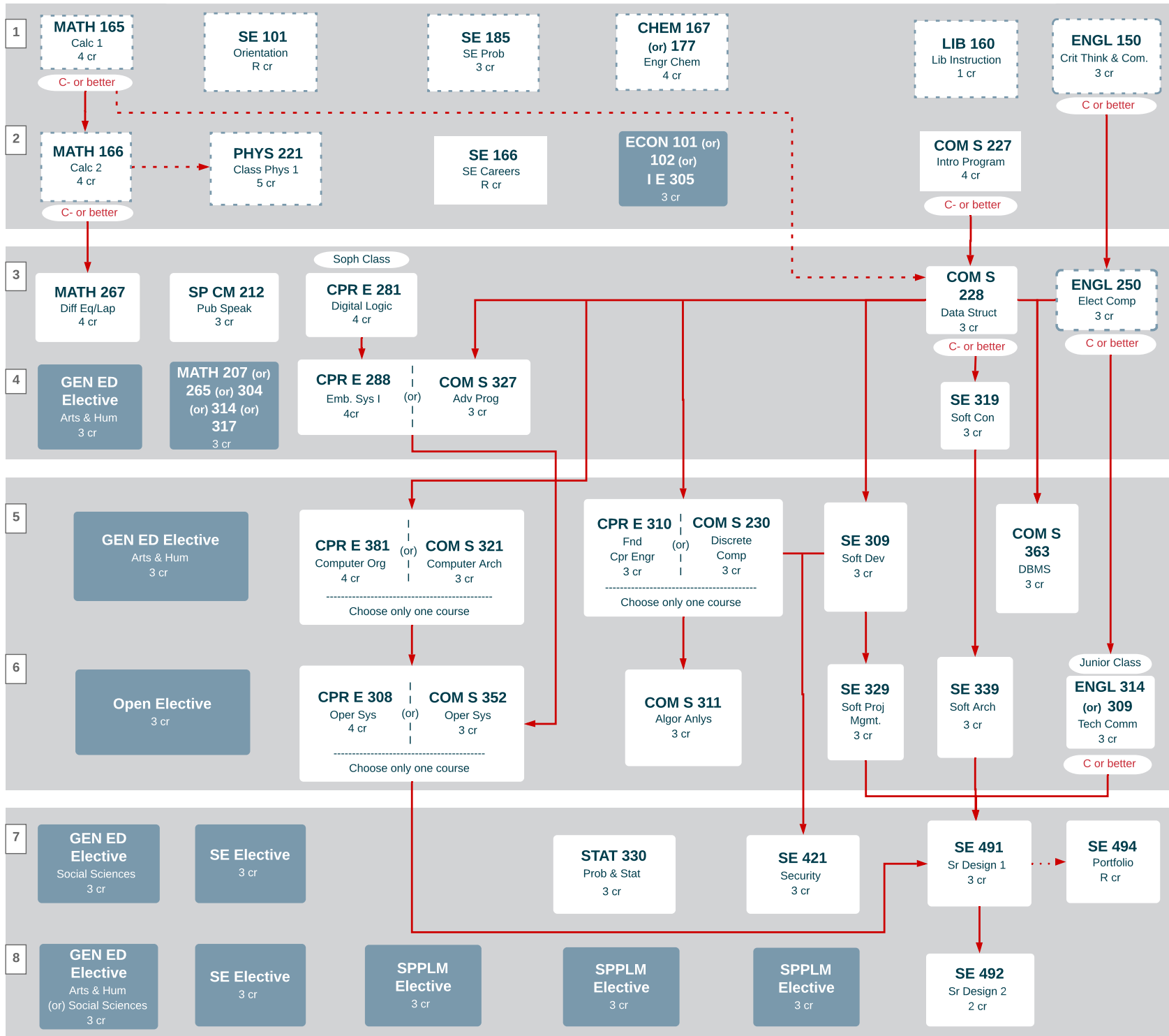


# SOFTWARE ENGINEERING FLOWCHART, 2019-2020 CATALOG (125 credits)



## LEGEND

Co-Requisite - - - - ->

Pre-Requisite ->

Engineering Basic Program  

1. This flowchart is only a guide. For more detailed information, including prerequisites and co-requisites, see the ISU catalog.

2. Check the electives list on [www.se.iastate.edu](http://www.se.iastate.edu).

3. Course and term offerings subject to change.

4. Lab and lecture must be passed in the same semester to receive credit for CprE courses.

5. Students who take the 4 credit hour CPR E courses (CPR E 288, 308, and 381) can use the extra 1 credit per course toward the supplemental elective requirement.

6. College of Engineering requires two years of a single world language in high school or two semesters of college in a single world language.

7. Iowa State undergraduate students must fulfill graduation requirements in two areas: U.S. Diversity & International Perspectives. Both require three credits of course work.